



International Student Services
University of Massachusetts Boston
Campus Center, 1st Floor, Room 1100
100 Morrissey Boulevard
Boston, Massachusetts 02125-3393
617-287-5500, Fax 617-287-3963
iss@umb.edu www.uac.umb.edu/international

INTERNATIONAL STUDENT

READMISSION GUIDE GRADUATE

Dear Student:

Welcome back to UMass Boston.

The enclosed packet of information includes guidelines and links to the forms you need for readmission to the university.

The International Student Services (ISS) office will handle the readmission process for you. ISS will also inform you of the university's decision.

1. International Student Readmission Guide - Graduate

This guide gives you the step-by-step procedures you need to follow to be readmitted as a graduate student to UMass Boston.

2. Form I-20 Readmission Request

The International Student Services office needs this in order to generate a new Form I-20 for you. You can download this form at <http://www.uac.umb.edu/assets/pdf/iss/formI20readmitrequest.pdf>

3. Readmission Application - Graduate

The UMass Boston Registrar needs this to process your readmission to the university. You can download this form at <http://www.registrar.umb.edu/forms/documents/GradreadmissionForm.pdf>

4. Declaration and Certification of Finances (DCF)

The university requires this form, which certifies that you have enough funds (in US dollars) to cover educational and living expenses in the U.S. for one academic year. The DCF shows the estimated amount needed. You can download this form at http://www.uac.umb.edu/assets/pdf/iss/cert_of_finance.pdf

Please read the attached International Student Readmission Guide carefully for detailed step-by-step instructions.

We're looking forward to your return on campus!

International Student Services
University of Massachusetts Boston



International Student Services
University of Massachusetts Boston
Campus Center, 1st Floor, Room 1100
100 Morrissey Boulevard
Boston, Massachusetts 02125-3393
617-287-5500, Fax 617-287-3963
iss@umb.edu www.uac.umb.edu/international

INTERNATIONAL STUDENT

READMISSION GUIDE GRADUATE

- Please read and follow these steps carefully for readmission to UMass Boston.
- SUBMIT ALL FORMS TO ISS, which will handle the readmission process for you.
- Contact the International Student Services office if you have any questions.

1. Obtain an unofficial UMass Boston academic transcript from [WISER](#) or by contacting the [Registrar's Office](#). Include your transcript in your readmission packet.

If you are unable to obtain one, attach an explanatory note, and we will obtain a copy for you.

Answer these two questions to determine further documentation needed.

A. What is your UMass Boston grade point average (GPA)?

3.0 or above You are eligible for readmission. However, your application must be approved by your graduate program director before you can be readmitted.

Below 3.0 Contact your graduate program office to find out what, if any, additional documentation is needed to explain your academic standing, to support your readmission into that graduate program.

B. Are you within the time limit for completing your degree, as your program requires?

Yes No additional form is needed.

No Download a [Statute of Limitations Extension Form](#) or obtain a copy from the Registrar's Office. Complete it and submit it with the rest of this package.

2. Determine if you need a new Form I-20 and/or F-1 student visa.

If you remained in the U.S. and studied in another institution during your absence from UMass Boston, you need to transfer your I-20 back to UMass Boston. To do this, complete and submit the appropriate [I-20 Transfer Verification](#) form and include it with your application package.

If you traveled outside the U.S. for any period of time during your absence from UMass Boston, refer to the Form I-20 and Visa Status Diagram in this packet to determine what new documentation, if any, you need.

3. Complete the International Student Form I-20 Readmission Request included in this packet.

4. Complete the Readmission Application - Graduate included in this packet.

5. Complete the [Declaration and Certification of Finances \(DCF\)](#).

If you are supporting yourself, you must provide an original bank statement or an original letter from your bank dated within the past two months, showing a three-month account history and funds in U.S. dollars.

If someone else is supporting you, they must complete the sponsor's statement of support (included in this packet) and provide an original bank statement or an original letter from their bank dated within the past two months, showing a three-month account history and funds in U.S. dollars.

6. Include a check or money order for \$25 payable to University of Massachusetts Boston, for the following:

Registrar's readmission processing fee:	\$25
Program fee for each semester of absence:	\$175
Late fee, if applicable:	\$50

If you are readmitted, we will forward these payments to the Registrar, together with your approved readmission application.

7. If your Application for Readmission shows an address outside the U.S., inform the Office of International Student Services and the Registrar of your new U.S. address as soon as you know it.

8. If you currently live outside the U.S. and would like your Form I-20 mailed via Express Mail, include a separate check or money order for \$35 payable to University of Massachusetts Boston, to cover costs.

9. If you want your Form I-20 sent to a DIFFERENT address from the one indicated on your Form I-20 Readmission Request, please give us a reliable and clearly written address. Failure to do this could result in serious delays.

10. Write "READMISSION" on the bottom right hand side of the envelope front.

11. Mail all documents and payment(s) to:

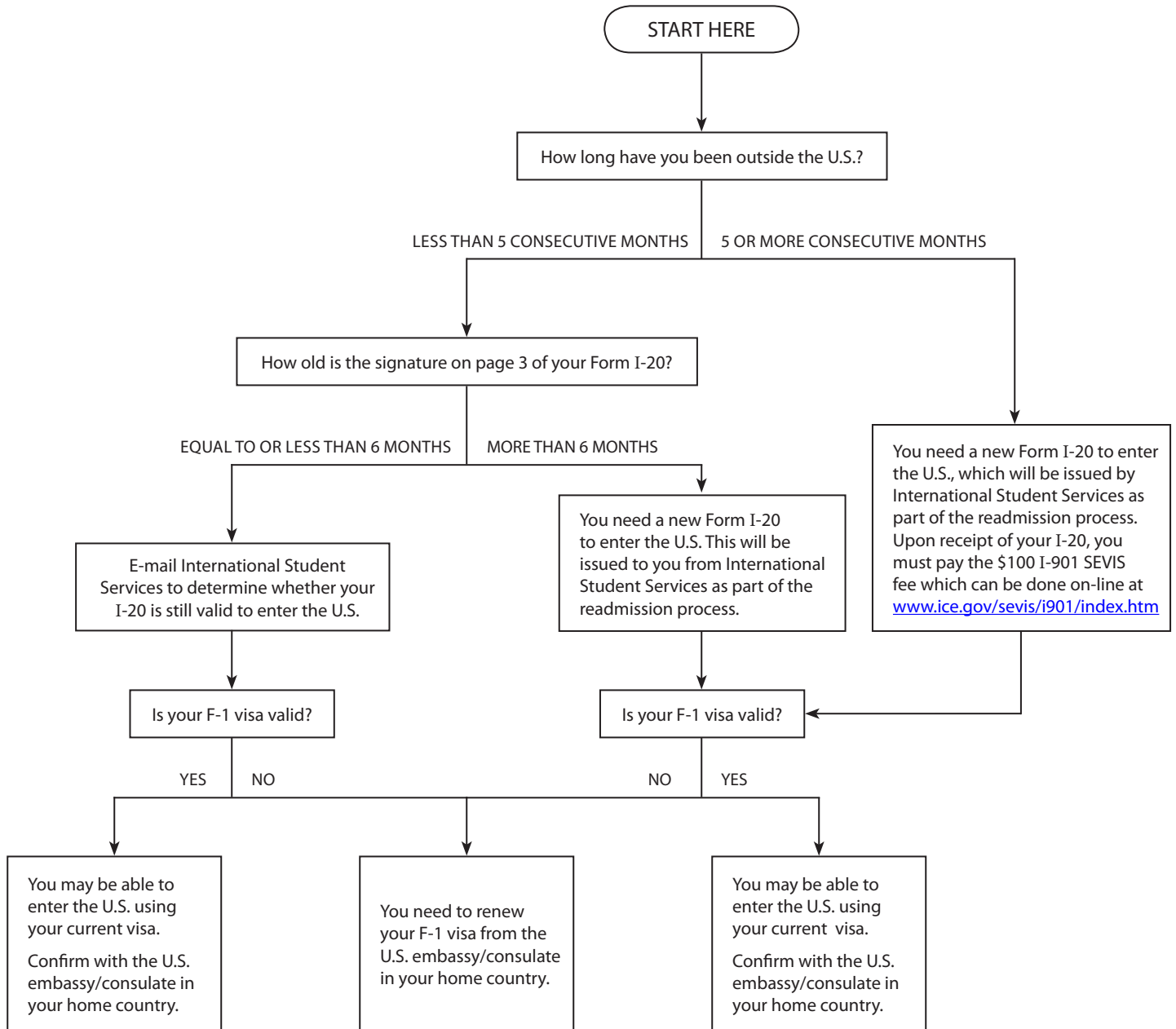
International Student Services
University Advising, Campus Center First Floor
100 Morrissey Boulevard
Boston, MA 02125

We will forward your Application for Readmission, check(s), and supporting documents to your graduate program office.



**READMISSION GUIDE
GRADUATE**

Form I-20 and Visa Status Diagram



SPONSOR'S STATEMENT OF SUPPORT

I, _____, am providing support in the amount of US\$ _____ to _____ for his/her studies at the University of Massachusetts Boston. I certify that I have sufficient funds to support this individual. I enclose proof of this funding in the form of an original bank statement or an original letter from a bank dated within the past two months, showing a three-month account history and funds in U.S. dollars. I further certify that these funds are readily accessible for use in the United States.

Signature: _____

Name printed: _____

Date: _____

Relationship to applicant: _____

Country of citizenship: _____

Permanent address: _____

E-mail address: _____

Fax number: _____

To student:

Submit this signed original statement with the Declaration and Certification of Finances form.
Copies are not acceptable.
Keep a copy for your records.